

Acta Crystallographica Section E

Structure Reports

Online

ISSN 1600-5368

(E)-N'-(5-Bromo-2-hydroxybenzylidene)-3-methylbenzohydrazide

Hai-Chang Guo,^a Shi-Yong Liu^{a*} and Xiao-Ling Wang^b

^aCollege of Chemistry & Pharmacy, Taizhou University, Taizhou Zhejiang 317000, People's Republic of China, and ^bDepartment of Chemistry, Liaoning Normal University, Dalian 116029, People's Republic of China

Correspondence e-mail: liushiyong2010@yahoo.cn

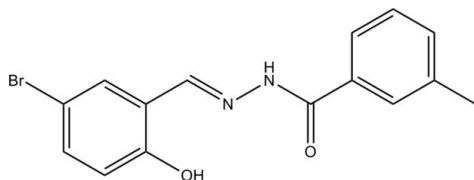
Received 15 June 2011; accepted 28 June 2011

Key indicators: single-crystal X-ray study; $T = 298$ K; mean $\sigma(\text{C}-\text{C}) = 0.005$ Å; R factor = 0.049; wR factor = 0.106; data-to-parameter ratio = 16.5.

In the title molecule, $\text{C}_{15}\text{H}_{13}\text{BrN}_2\text{O}_2$, an intramolecular $\text{O}-\text{H}\cdots\text{N}$ hydrogen bond influences the molecular conformation; the two benzene rings form a dihedral angle of 13.6 (3)°. In the crystal, intermolecular $\text{N}-\text{H}\cdots\text{O}$ hydrogen bonds link the molecules into chains along the a axis and weak intermolecular $\text{C}-\text{H}\cdots\text{O}$ hydrogen bonds further link these chains into layers parallel to the ac plane.

Related literature

For applications of hydrazone compounds, see: Hillmer *et al.* (2010); Raj *et al.* (2007). For the crystal structures of related hydrazone compounds, see: Vijayakumar *et al.* (2009); Liu & You (2010); Liu & Wang (2010). For related structures, see: Xu *et al.* (2009); Shafiq *et al.* (2009).



Experimental

Crystal data

$\text{C}_{15}\text{H}_{13}\text{BrN}_2\text{O}_2$
 $M_r = 333.18$
 Monoclinic, $P2_1/n$
 $a = 7.138$ (3) Å
 $b = 27.404$ (10) Å

$c = 7.859$ (3) Å
 $\beta = 112.297$ (5)°
 $V = 1422.4$ (9) Å³
 $Z = 4$
 Mo $K\alpha$ radiation

$\mu = 2.89$ mm⁻¹
 $T = 298$ K

$0.13 \times 0.10 \times 0.10$ mm

Data collection

Bruker SMART CCD area-detector diffractometer
 Absorption correction: multi-scan (SADABS; Bruker, 2001)
 $T_{\min} = 0.705$, $T_{\max} = 0.761$
 6807 measured reflections
 3045 independent reflections
 1489 reflections with $I > 2\sigma(I)$
 $R_{\text{int}} = 0.056$

Refinement

$R[F^2 > 2\sigma(F^2)] = 0.049$
 $wR(F^2) = 0.106$
 $S = 0.99$
 3045 reflections
 185 parameters
 1 restraint

H atoms treated by a mixture of independent and constrained refinement
 $\Delta\rho_{\text{max}} = 0.32$ e Å⁻³
 $\Delta\rho_{\text{min}} = -0.36$ e Å⁻³

Table 1

Hydrogen-bond geometry (Å, °).

$D-H\cdots A$	$D-H$	$H\cdots A$	$D\cdots A$	$D-H\cdots A$
$\text{N2}-\text{H2}\cdots\text{O2}^{\text{i}}$	0.90 (1)	2.02 (2)	2.890 (4)	163 (4)
$\text{O1}-\text{H1}\cdots\text{N1}$	0.82	1.89	2.605 (4)	146
$\text{C14}-\text{H14}\cdots\text{O1}^{\text{ii}}$	0.93	2.44	3.226 (4)	143

Symmetry codes: (i) $x + \frac{1}{2}, -y + \frac{3}{2}, z + \frac{1}{2}$; (ii) $x, y, z + 1$.

Data collection: SMART (Bruker, 2007); cell refinement: SAINT (Bruker, 2007); data reduction: SAINT; program(s) used to solve structure: SHELXTL (Sheldrick, 2008); program(s) used to refine structure: SHELXTL; molecular graphics: SHELXTL; software used to prepare material for publication: SHELXTL.

The authors acknowledge the Undergraduate Innovation Group Project of Zhejiang Province (project no. 2010R428015).

Supplementary data and figures for this paper are available from the IUCr electronic archives (Reference: CV5119).

References

- Bruker (2001). SADABS. Bruker AXS Inc., Madison, Wisconsin, USA.
 Bruker (2007). SMART and SAINT. Bruker AXS Inc., Madison, Wisconsin, USA.
 Hillmer, A. S., Putcha, P., Levin, J., Hogen, T., Hyman, B. T., Kretschmar, H., McLean, P. J. & Giese, A. (2010). *Biochem. Biophys. Res. Commun.* **391**, 461–466.
 Liu, S.-Y. & Wang, X. (2010). *Acta Cryst.* **E66**, o1775.
 Liu, S.-Y. & You, Z. (2010). *Acta Cryst.* **E66**, o1652.
 Raj, K. K. V., Narayana, B., Ashalatha, B. V., Kumari, N. S. & Sarojini, B. K. (2007). *Eur. J. Med. Chem.* **42**, 425–429.
 Shafiq, Z., Yaqub, M., Tahir, M. N., Hussain, A. & Iqbal, M. S. (2009). *Acta Cryst.* **E65**, o2898.
 Sheldrick, G. M. (2008). *Acta Cryst.* **A64**, 112–122.
 Vijayakumar, S., Adhikari, A., Kalluraya, B. & Chandrasekharan, K. (2009). *Opt. Mater.* **31**, 1564–1569.
 Xu, L., Huang, S.-S., Zhang, B.-J., Wang, S.-Y. & Zhang, H.-L. (2009). *Acta Cryst.* **E65**, o2412.

supplementary materials

Acta Cryst. (2011). E67, o1878 [doi:10.1107/S1600536811025426]

(*E*)-*N'*-(5-Bromo-2-hydroxybenzylidene)-3-methylbenzohydrazide

H.-C. Guo, S.-Y. Liu and X.-L. Wang

Comment

Considerable attention has been focused on hydrazones and their medicinal applications (Hillmer *et al.*, 2010; Raj *et al.*, 2007). The crystal structures of such compounds are of particular interest (Vijayakumar *et al.*, 2009). As a continuation of our work with hydrazone compounds (Liu & You, 2010; Liu & Wang, 2010), we report herein the crystal structure of the title compound, (I).

In (I) (Fig. 1), two benzene rings are inclined with a dihedral angle of 13.6 (3) °. All the bond lengths are comparable to those observed in related structures (Xu *et al.*, 2009; Shafiq *et al.*, 2009), and those we reported previously (Liu & You, 2010; Liu & Wang, 2010).

In the crystal structure, molecules are linked through N—H···O hydrogen bonds (Table 1), to form one-dimensional chains running along the *a* axis (Fig. 2). Weak intermolecular C—H···O hydrogen bonds (Table 1) link further these chains into layers parallel to *ac* plane.

Experimental

The title compound was prepared by the condensation reaction of 5-bromosalicylaldehyde (0.05 mol, 10.0 g) and 3-methylbenzohydrazide (0.05 mol, 7.5 g) in anhydrous methanol (100 ml) at ambient temperature. Colourless block-shaped single crystals suitable for X-ray structural determination were obtained by slow evaporation of the solution for 5 d.

Refinement

H2 was located from a difference Fourier map and refined isotropically, with the N—H distance restrained to 0.90 (1) Å. The remaining H atoms were positioned geometrically and constrained to ride on their parent atoms, with C—H distances of 0.93–0.96 Å, O—H distance of 0.82 Å, and with $U_{\text{iso}}(\text{H}) = 1.2U_{\text{eq}}(\text{C})$ and $1.5U_{\text{eq}}(\text{O1 and C15})$.

Figures

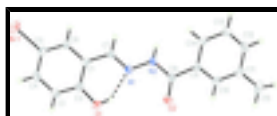


Fig. 1. The molecular structure of (I). Displacement ellipsoids are drawn at the 30% probability level. Hydrogen atoms are shown as spheres of arbitrary radius and the intramolecular hydrogen bond is drawn as a dashed line.

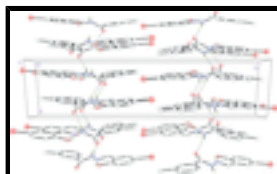


Fig. 2. A portion of the crystal packing viewed along the *c* axis. N—H···O hydrogen bonds are shown as dashed lines. Hydrogen atoms not involved in N—H···O hydrogen bonding were omitted.

(E)-N'-(5-Bromo-2-hydroxybenzylidene)-3-methylbenzohydrazide

Crystal data

$C_{15}H_{13}BrN_2O_2$	$F(000) = 672$
$M_r = 333.18$	$D_x = 1.556 \text{ Mg m}^{-3}$
Monoclinic, $P2_1/n$	Mo $K\alpha$ radiation, $\lambda = 0.71073 \text{ \AA}$
Hall symbol: -P 2yn	Cell parameters from 983 reflections
$a = 7.138 (3) \text{ \AA}$	$\theta = 2.5\text{--}24.5^\circ$
$b = 27.404 (10) \text{ \AA}$	$\mu = 2.89 \text{ mm}^{-1}$
$c = 7.859 (3) \text{ \AA}$	$T = 298 \text{ K}$
$\beta = 112.297 (5)^\circ$	Block, colourless
$V = 1422.4 (9) \text{ \AA}^3$	$0.13 \times 0.10 \times 0.10 \text{ mm}$
$Z = 4$	

Data collection

Bruker SMART CCD area-detector diffractometer	3045 independent reflections
Radiation source: fine-focus sealed tube graphite	1489 reflections with $I > 2\sigma(I)$
ω scans	$R_{\text{int}} = 0.056$
Absorption correction: multi-scan (SADABS; Bruker, 2001)	$\theta_{\text{max}} = 27.0^\circ$, $\theta_{\text{min}} = 2.9^\circ$
$T_{\text{min}} = 0.705$, $T_{\text{max}} = 0.761$	$h = -9 \rightarrow 8$
6807 measured reflections	$k = -29 \rightarrow 35$
	$l = -7 \rightarrow 10$

Refinement

Refinement on F^2	Primary atom site location: structure-invariant direct methods
Least-squares matrix: full	Secondary atom site location: difference Fourier map
$R[F^2 > 2\sigma(F^2)] = 0.049$	Hydrogen site location: inferred from neighbouring sites
$wR(F^2) = 0.106$	H atoms treated by a mixture of independent and constrained refinement
$S = 0.99$	$w = 1/[\sigma^2(F_o^2) + (0.0322P)^2 + 0.1905P]$
3045 reflections	where $P = (F_o^2 + 2F_c^2)/3$
185 parameters	$(\Delta/\sigma)_{\text{max}} < 0.001$
1 restraint	$\Delta\rho_{\text{max}} = 0.32 \text{ e \AA}^{-3}$
	$\Delta\rho_{\text{min}} = -0.36 \text{ e \AA}^{-3}$

Special details

Geometry. All esds (except the esd in the dihedral angle between two l.s. planes) are estimated using the full covariance matrix. The cell esds are taken into account individually in the estimation of esds in distances, angles and torsion angles; correlations between esds

in cell parameters are only used when they are defined by crystal symmetry. An approximate (isotropic) treatment of cell esds is used for estimating esds involving l.s. planes.

Refinement. Refinement of F^2 against ALL reflections. The weighted R-factor wR and goodness of fit S are based on F^2 , conventional R-factors R are based on F, with F set to zero for negative F^2 . The threshold expression of $F^2 > 2\sigma(F^2)$ is used only for calculating R-factors(gt) etc. and is not relevant to the choice of reflections for refinement. R-factors based on F^2 are statistically about twice as large as those based on F, and R- factors based on ALL data will be even larger.

Fractional atomic coordinates and isotropic or equivalent isotropic displacement parameters (\AA^2)

	x	y	z	$U_{\text{iso}}^*/U_{\text{eq}}$
Br1	0.82155 (9)	1.017416 (16)	0.22011 (7)	0.0691 (2)
N1	0.7539 (5)	0.78962 (11)	0.4049 (4)	0.0343 (8)
N2	0.7822 (5)	0.76007 (11)	0.5550 (4)	0.0354 (8)
O1	0.6966 (5)	0.80234 (9)	0.0601 (4)	0.0539 (9)
H1	0.7095	0.7865	0.1525	0.081*
O2	0.6037 (4)	0.69873 (9)	0.3697 (3)	0.0444 (8)
C1	0.7856 (6)	0.86760 (13)	0.2857 (5)	0.0313 (9)
C2	0.7363 (6)	0.85015 (13)	0.1057 (5)	0.0365 (10)
C3	0.7251 (7)	0.88254 (15)	-0.0339 (5)	0.0474 (12)
H3	0.6992	0.8709	-0.1518	0.057*
C4	0.7520 (7)	0.93154 (15)	0.0010 (6)	0.0498 (12)
H4	0.7406	0.9531	-0.0938	0.060*
C5	0.7957 (6)	0.94894 (14)	0.1761 (6)	0.0430 (11)
C6	0.8154 (6)	0.91721 (13)	0.3166 (5)	0.0386 (10)
H6	0.8496	0.9293	0.4352	0.046*
C7	0.8052 (6)	0.83446 (14)	0.4357 (5)	0.0358 (10)
H7	0.8558	0.8460	0.5559	0.043*
C8	0.7035 (6)	0.71426 (13)	0.5232 (5)	0.0327 (10)
C9	0.7491 (6)	0.68420 (13)	0.6938 (5)	0.0320 (10)
C10	0.7697 (6)	0.63410 (14)	0.6820 (5)	0.0367 (10)
H10	0.7537	0.6202	0.5694	0.044*
C11	0.8140 (6)	0.60430 (13)	0.8356 (6)	0.0386 (10)
C12	0.8309 (6)	0.62636 (16)	1.0002 (6)	0.0514 (12)
H12	0.8573	0.6069	1.1038	0.062*
C13	0.8099 (7)	0.67597 (16)	1.0153 (6)	0.0498 (12)
H13	0.8230	0.6897	1.1275	0.060*
C14	0.7689 (6)	0.70533 (14)	0.8605 (5)	0.0400 (11)
H14	0.7548	0.7389	0.8688	0.048*
C15	0.8392 (8)	0.55033 (15)	0.8246 (7)	0.0644 (14)
H15A	0.7782	0.5400	0.6987	0.097*
H15B	0.7747	0.5340	0.8959	0.097*
H15C	0.9808	0.5424	0.8722	0.097*
H2	0.879 (5)	0.7674 (15)	0.664 (3)	0.080*

Atomic displacement parameters (\AA^2)

U^{11} U^{22} U^{33} U^{12} U^{13} U^{23}

supplementary materials

Br1	0.0954 (5)	0.0325 (3)	0.0780 (4)	0.0030 (3)	0.0314 (3)	0.0053 (2)
N1	0.038 (2)	0.0305 (18)	0.034 (2)	0.0021 (15)	0.0127 (17)	0.0075 (14)
N2	0.037 (2)	0.0333 (19)	0.0296 (19)	-0.0013 (16)	0.0062 (17)	0.0078 (15)
O1	0.084 (2)	0.0348 (17)	0.0420 (17)	-0.0091 (16)	0.0230 (18)	-0.0069 (13)
O2	0.054 (2)	0.0402 (17)	0.0278 (16)	-0.0026 (13)	0.0030 (15)	-0.0019 (12)
C1	0.028 (3)	0.034 (2)	0.035 (2)	0.0047 (18)	0.0148 (19)	0.0009 (18)
C2	0.036 (3)	0.031 (2)	0.040 (3)	0.0017 (18)	0.012 (2)	-0.0017 (19)
C3	0.067 (4)	0.046 (3)	0.031 (2)	-0.002 (2)	0.020 (2)	-0.001 (2)
C4	0.060 (3)	0.046 (3)	0.045 (3)	0.005 (2)	0.021 (3)	0.016 (2)
C5	0.047 (3)	0.028 (2)	0.053 (3)	0.0012 (19)	0.017 (2)	0.0012 (19)
C6	0.040 (3)	0.034 (2)	0.036 (2)	0.0017 (19)	0.009 (2)	0.0013 (19)
C7	0.035 (3)	0.035 (2)	0.034 (2)	0.0006 (19)	0.010 (2)	0.0022 (18)
C8	0.032 (3)	0.031 (2)	0.034 (2)	0.0023 (18)	0.011 (2)	0.0027 (18)
C9	0.032 (3)	0.032 (2)	0.029 (2)	-0.0009 (17)	0.008 (2)	0.0021 (17)
C10	0.034 (3)	0.037 (2)	0.037 (2)	0.0035 (18)	0.012 (2)	0.0017 (18)
C11	0.031 (3)	0.034 (2)	0.052 (3)	0.0041 (19)	0.016 (2)	0.009 (2)
C12	0.050 (3)	0.056 (3)	0.041 (3)	-0.008 (2)	0.010 (2)	0.018 (2)
C13	0.059 (3)	0.057 (3)	0.033 (3)	-0.010 (2)	0.017 (2)	-0.001 (2)
C14	0.047 (3)	0.035 (2)	0.038 (2)	-0.005 (2)	0.016 (2)	-0.0043 (19)
C15	0.073 (4)	0.039 (3)	0.084 (4)	0.003 (2)	0.033 (3)	0.014 (2)

Geometric parameters (Å, °)

Br1—C5	1.904 (4)	C6—H6	0.9300
N1—C7	1.279 (4)	C7—H7	0.9300
N1—N2	1.381 (4)	C8—C9	1.501 (5)
N2—C8	1.359 (4)	C9—C10	1.388 (5)
N2—H2	0.899 (10)	C9—C14	1.390 (5)
O1—C2	1.359 (4)	C10—C11	1.391 (5)
O1—H1	0.8200	C10—H10	0.9300
O2—C8	1.222 (4)	C11—C12	1.391 (5)
C1—C6	1.383 (5)	C11—C15	1.496 (5)
C1—C2	1.406 (5)	C12—C13	1.378 (6)
C1—C7	1.452 (5)	C12—H12	0.9300
C2—C3	1.390 (5)	C13—C14	1.394 (5)
C3—C4	1.369 (5)	C13—H13	0.9300
C3—H3	0.9300	C14—H14	0.9300
C4—C5	1.375 (5)	C15—H15A	0.9600
C4—H4	0.9300	C15—H15B	0.9600
C5—C6	1.371 (5)	C15—H15C	0.9600
C7—N1—N2	117.6 (3)	O2—C8—C9	122.6 (3)
C8—N2—N1	117.9 (3)	N2—C8—C9	114.1 (3)
C8—N2—H2	120 (3)	C10—C9—C14	120.0 (3)
N1—N2—H2	120 (3)	C10—C9—C8	118.4 (3)
C2—O1—H1	109.5	C14—C9—C8	121.6 (3)
C6—C1—C2	118.3 (3)	C9—C10—C11	121.2 (4)
C6—C1—C7	120.7 (3)	C9—C10—H10	119.4
C2—C1—C7	120.9 (3)	C11—C10—H10	119.4
O1—C2—C3	117.6 (4)	C10—C11—C12	117.6 (4)

O1—C2—C1	122.7 (3)	C10—C11—C15	121.5 (4)
C3—C2—C1	119.6 (3)	C12—C11—C15	120.9 (4)
C4—C3—C2	120.4 (4)	C13—C12—C11	122.4 (4)
C4—C3—H3	119.8	C13—C12—H12	118.8
C2—C3—H3	119.8	C11—C12—H12	118.8
C3—C4—C5	120.1 (4)	C12—C13—C14	119.2 (4)
C3—C4—H4	119.9	C12—C13—H13	120.4
C5—C4—H4	119.9	C14—C13—H13	120.4
C6—C5—C4	120.1 (4)	C9—C14—C13	119.7 (4)
C6—C5—Br1	120.4 (3)	C9—C14—H14	120.2
C4—C5—Br1	119.5 (3)	C13—C14—H14	120.2
C5—C6—C1	121.3 (4)	C11—C15—H15A	109.5
C5—C6—H6	119.3	C11—C15—H15B	109.5
C1—C6—H6	119.3	H15A—C15—H15B	109.5
N1—C7—C1	121.0 (3)	C11—C15—H15C	109.5
N1—C7—H7	119.5	H15A—C15—H15C	109.5
C1—C7—H7	119.5	H15B—C15—H15C	109.5
O2—C8—N2	123.3 (3)		

Hydrogen-bond geometry (Å, °)

<i>D</i> —H \cdots <i>A</i>	<i>D</i> —H	H \cdots <i>A</i>	<i>D</i> \cdots <i>A</i>	<i>D</i> —H \cdots <i>A</i>
N2—H2 \cdots O2 ⁱ	0.90 (1)	2.02 (2)	2.890 (4)	163 (4)
O1—H1 \cdots N1	0.82	1.89	2.605 (4)	146
C14—H14 \cdots O1 ⁱⁱ	0.93	2.44	3.226 (4)	143

Symmetry codes: (i) $x+1/2, -y+3/2, z+1/2$; (ii) $x, y, z+1$.

Fig. 1

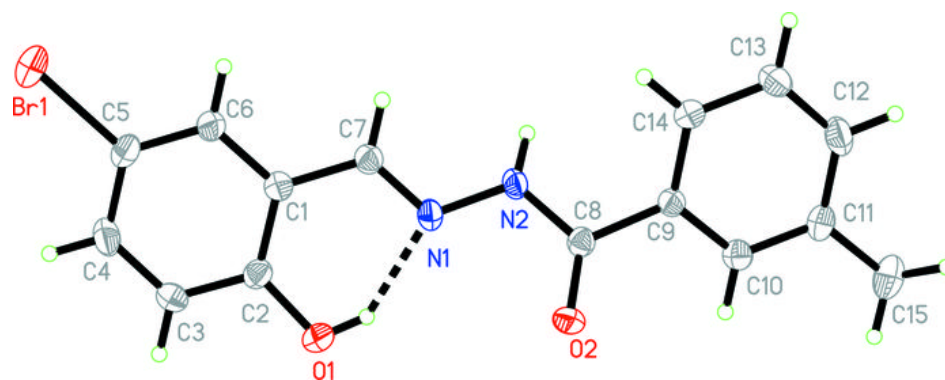


Fig. 2

